

TUNNEL VISIONS

This co-design project will bring the diverse and growing local community together to help create a bold new identity for Nine Elms.

Our three dimensional markers will celebrate the area's rich history, empower residents and visitors to explore the area on foot or by bike, and invite them to contribute directly to an exciting local landmark that celebrates the area today.



Co-designing a new identity

With a nod to the area's railway heritage and context, we're reimagining traditional railway station 'daggerboards' to create a new design language. We'll work with school children, residents and traders to design new daggerboards for Nine Elms. Using simple paper-cutting techniques – either in facilitated workshops, or following online or posted instructions – it's easy to create beautiful repeat patterns. These will be used to create the intricately cut timber façades. Participants will be able to point out their designs every time they walk or cycle through.

A flexible kit of parts

A common design language and materiality unite the interventions:

Creating a visual connection from the new station to Ponton Road, the unmissable interventions will orientate and direct visitors towards and through the new tunnel. Additional elements can be added or relocated as required, or as the local context changes.

1. A dramatic funnel archway to the south of the viaduct with seating and lighting
2. A decorative arch to the north with integrated lighting
3. A low fence to help navigate the shift in level
4. A 'community totem, which glows at night
5. Optional planters along route from tube to Ponton Rd



Construction and maintenance

Each structure is composed of weather-proofed, timber slats fixed to a steel frame: simple components which are easily maintained. The freestanding structures are designed with removable sections to give access to railway infrastructure.

Sustainability

The key material - timber - will be sustainably sourced. The minimal steel frame can be recycled or re-used, and the totem, planters, and other elements can be relocated elsewhere in the future. The components will optimise standard-sizes of materials, minimising waste.

Most importantly, the joyful structures will make it easy to walk, cycle or scoot, supporting a culture of active travel.

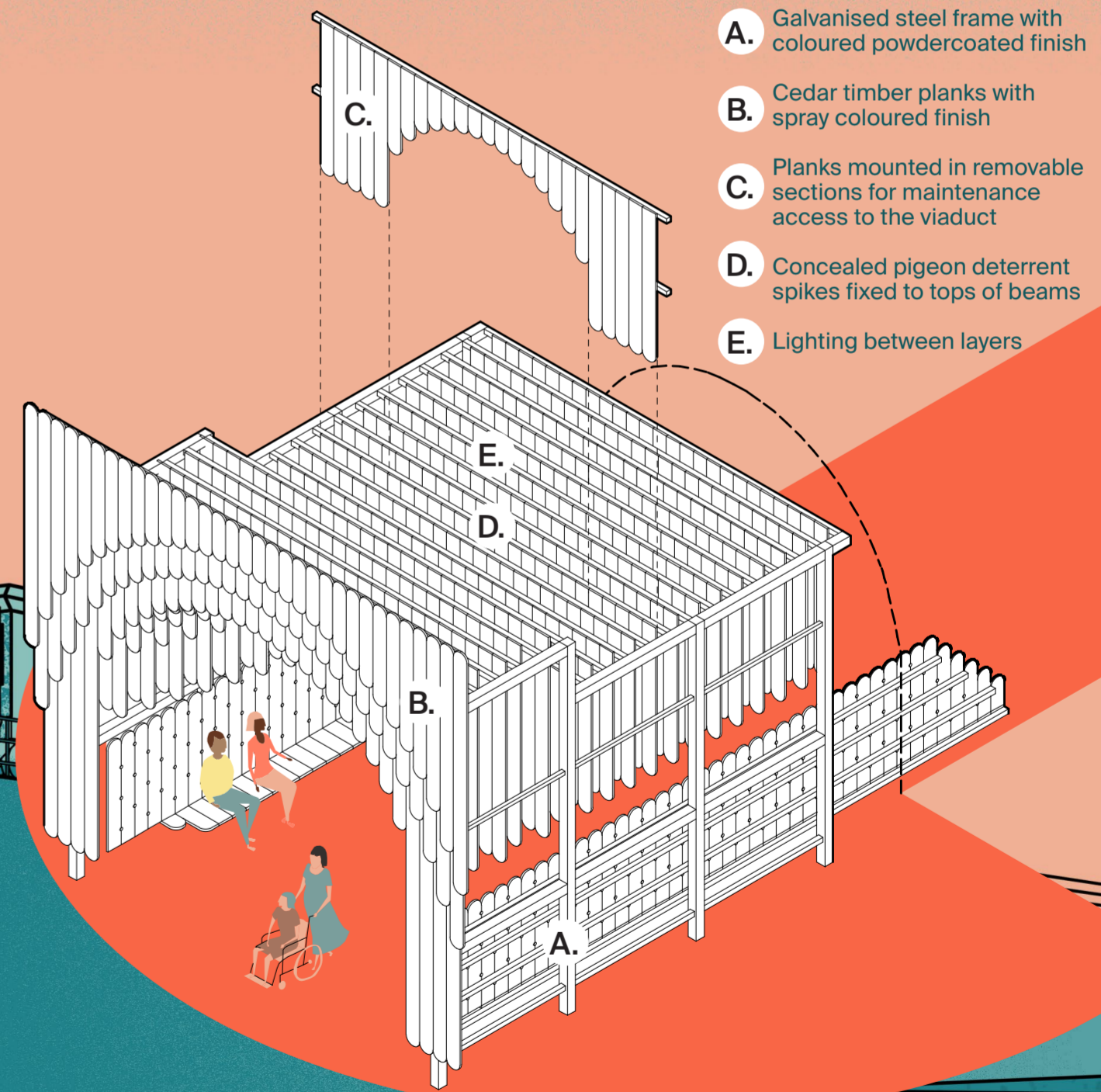
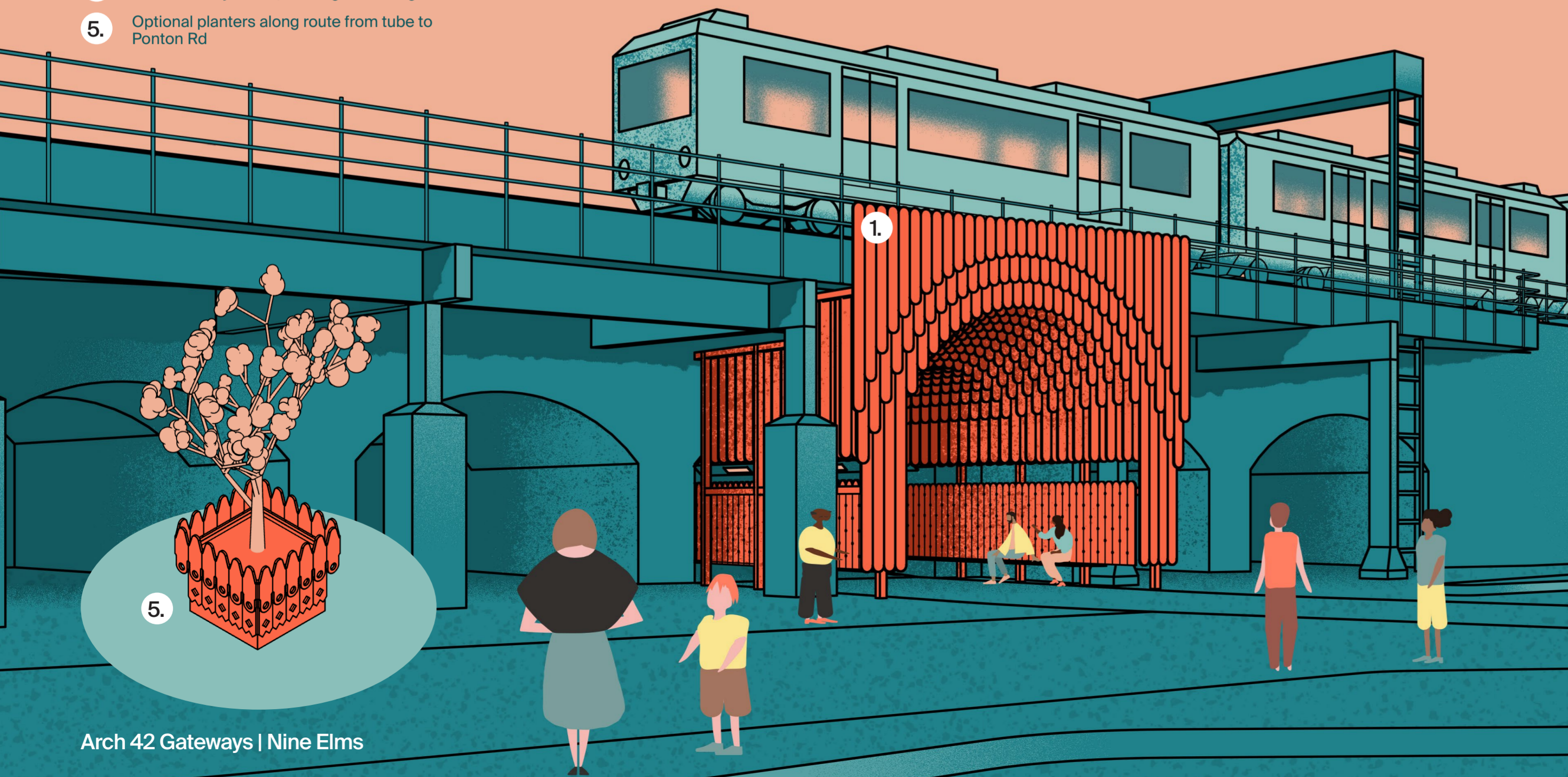
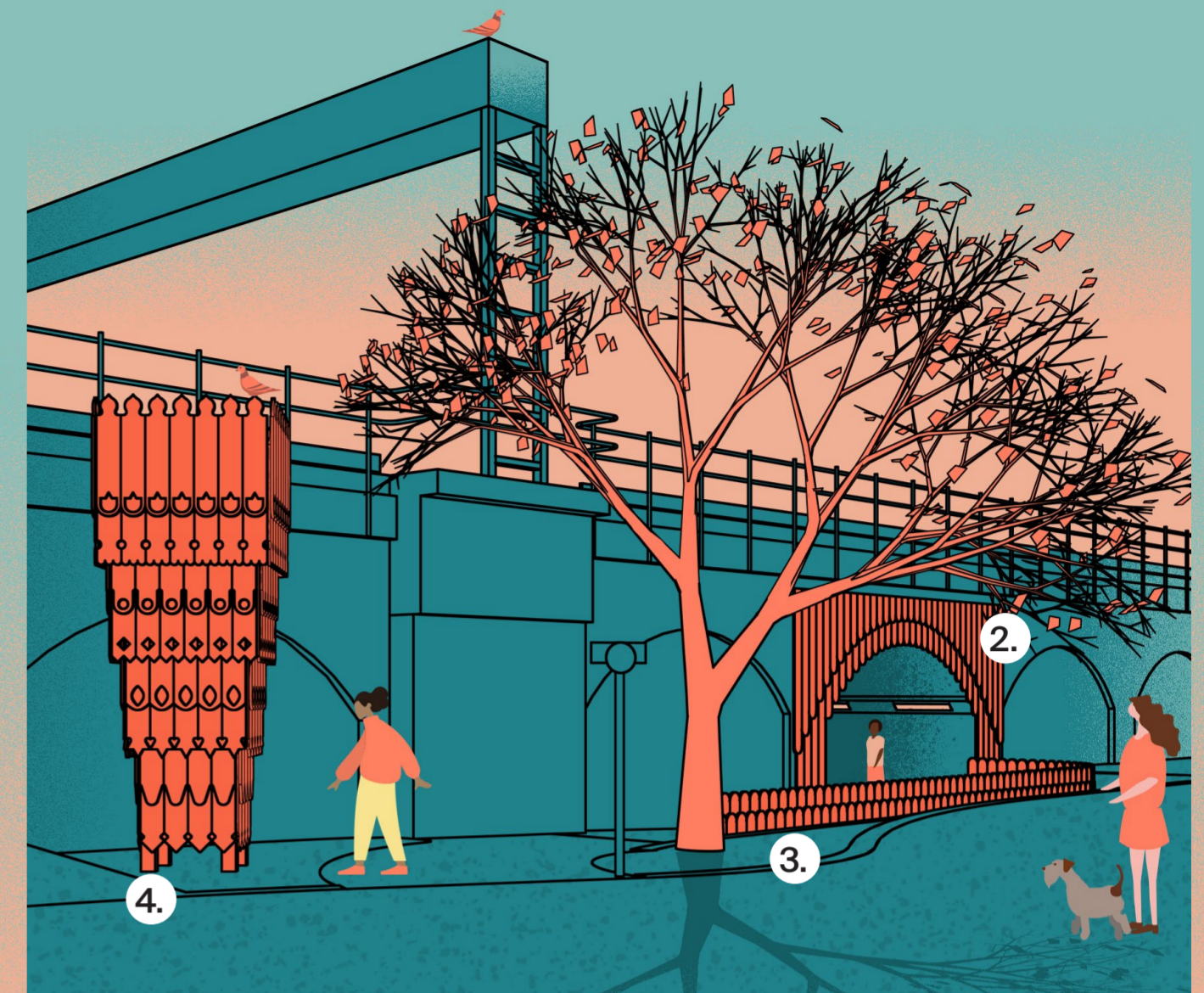


Community, identity, resilience & joy

When urban areas rapidly change, new and existing communities can struggle to interact or feel a sense of autonomy over the new landscape; leaving both sides feeling disconnected. With Covid 19 causing the UK's highest recorded levels of loneliness, safe, meaningful interactions are more important than ever.

A sense of pride and ownership over the local environment, with opportunities to influence and improve it with others, helps build a sense of connection between people and local places. This helps build resilient communities, eliminate loneliness and creates a strong civic identity.

Projects Office focuses on creating spaces for good mental health. Our proposals will bring local people from different backgrounds together to co-create a landmark which celebrates Nine Elms' history, reflects its evolving multicultural identity, and looks forward to its bright future.



- A. Galvanised steel frame with coloured powdercoated finish
- B. Cedar timber planks with spray coloured finish
- C. Planks mounted in removable sections for maintenance access to the viaduct
- D. Concealed pigeon deterrent spikes fixed to tops of beams
- E. Lighting between layers